



CONNECT - LEAD - ENGAGE - LEARN - COLLABORATE

GREEN & HEALTHY SCHOOLS

Connecting and supporting champions who are creating healthy and sustainable schools



Brenda McDaniel
Environmental Education Program Manager
Gwinnett County Public Schools
Brenda.O.McDaniel@gcpsk12.org



What is a Green School ?



More than curriculum and programming



More than bricks and mortar



Begins with the future in mind



Learning experiences that prepare students to be green leaders



Sustainability imbedded in school culture



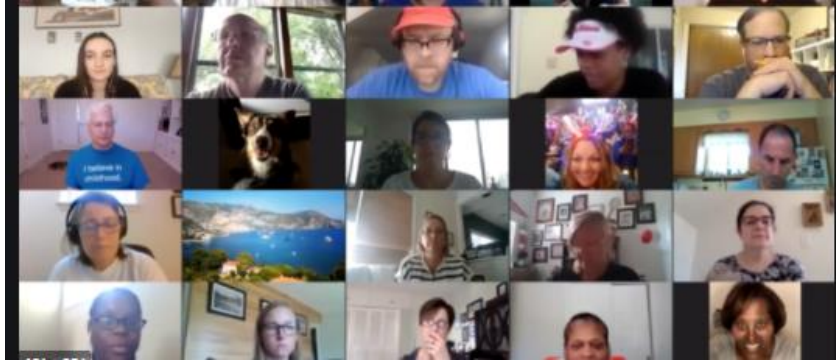
Reduces school's environmental footprint

What is the Green and Healthy Schools Program ?



Collaborative Program of Gwinnett Clean & Beautiful and Gwinnett County Public Schools

Building Capacity with Teacher Leaders



GHS Summer Workshop



Connecting and Collaborating



Engaging Students in Authentic, Real-world Problem Solving



Food Waste Warriors

Community Partners at Work - Compost Connectors



Compost Connectors Project
A HUGE Thanks to:
Food Well Alliance &
Gwinnett Clean and Beautiful



Compost Connectors - Student Teams



Learning and Engaging Off-Campus



Green Youth Advisory Council



**Mill Creek NGSS
Community Recycling Drives**

1/23 2/20 3/6
3/20 4/3 4/17 5/1

2pm-4pm @ Mill Creek High School
Remind: ngss2122
Instagram: millcreeknss

Recycle materials like glass, paper, plastic bags, and more!



GHS Platform



Behind the scenes

- School visits
- Garden workdays
- Workshops development
- Securing equipment/supplies
- Waste audits/analysis
- Recycling guidance
- Partner meetings
- Support GCPS Science Office
- Grant writing and reporting
- Maintain GHS eCLASS page
- Team meetings
- Researching best practices



Green and Healthy Schools Impacts

- ★ 71 current Green and Healthy Schools (submitting documentation)
- ★ 10,000 + students and teachers directly impacted
- ★ 5,000 students - Food Waste Warriors and Compost Connectors
- ★ 71 schools represented in teacher meetings and workshops
- ★ 60 schools with active outdoor learning gardens
- ★ 15 schools participated in the Great GA Pollinator Count
- ★ 10 schools with greenhouses and aquaponics systems
- ★ 3 schools operating farm robots



GHS Engagement Opportunities



Spread the word about the GHS Program



Mentor or speaker for classes or YAC



Utilization of facilities and equipment



March 29th - GHS Spring Teacher Meeting

Lake Lanier Floating Classroom



GREEN & HEALTHY SCHOOLS 2022 SUMMER WORKSHOP

Brenda McDaniel

Environmental Education Program Manager

Gwinnett County Public Schools

Brenda.O.McDaniel@gcpsk12.org

When: June 1, 2022, from 9:00 am – 11:00 am

Location: Lake Lanier Aquatic Learning Ctr., River Forks Park: 3500 Keith Bridge Road, Gainesville, Ga 30504

Why: Participants will climb aboard the floating classroom for a hands-on exploration of the history, ecology, conservation efforts, and challenges facing Lake Lanier. This experiential environmental education workshop will equip K-12 teachers with the knowledge and skills to engage students in water-based learning aligned to the Science AKS through the Green and Healthy Schools Program.

Sign up: PD&E with Course Number _____ (limit 40)

Sign-up deadline: April 22, 2022



GWINNETT

SCIENCE, ENGINEERING + INNOVATION FAIR

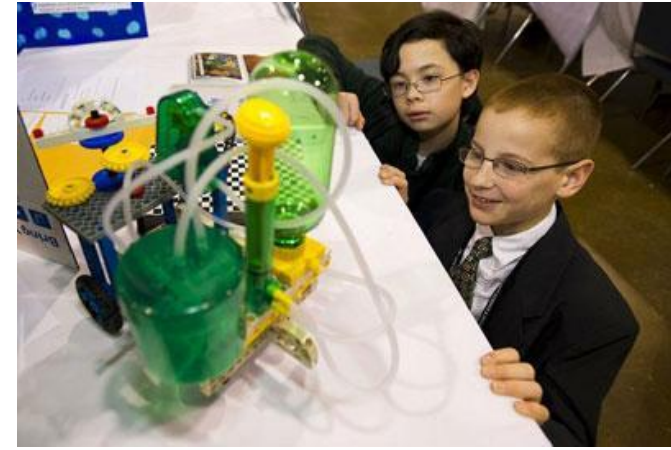
Friday, February 25, 2022
Gas South District Convention Center



Virtual Judging



Sponsorships



Workshop Speakers

Brenda McDaniel

Environmental Education Program Manager

Gwinnett County Public Schools

Brenda.O.McDaniel@gcpsk12.org

404-226-4092

Connecting and supporting champions who are creating healthy and sustainable schools

